



**Clear Lake Emergency
Medical Corps
Hurricane preparedness
Training
2011**



Are You Prepared ?

- 6 Do you Have a Kit?**
- 6 Do you Have a Plan?**
- 6 Are you Informed?**

Disaster Kit (What is Needed)

- 6 Water**
- 6 Food**
- 6 Fresh Air**
- 6 Warmth**
- 6 Fuel and Light**
- 6 Equipment**
- 6 Personal Supplies and Medication**
- 6 Personal Documents and Money**



Water



One gallon of water per person per day for at least three days, for drinking and sanitation



Food



At least a three-day
supply of non-perishable
food



Food



- Protein/Granola Bars
- Trail Mix/Dried Fruit
- Crackers/Cereals (for snacks)
- Canned Tuna, Beans, Turkey, Beef, Vienna Sausages, etc
- Canned Juice Candy/Gum (ideally hard candy and well sealed gum)



Fresh Air



Dust mask,

to help filter contaminated air and
plastic sheeting and duct tape to
shelter in place



Warmth



- Change of Clothes
- Undergarments
- Rain Coat / Poncho
- Blankets
- Cloth Sheets
- Plastic Sheets (Tarp)



Fuel and Light



- Battery Lighting (Flashlights, Lamps, etc.)
- Extra Batteries
- Flares
- Candles
- Lighter
- Water-Proof Matches



Equipment



- Can Opener
- Dishes/Utensils
- Shovel
- Emergency Radio (with batteries!)
- Pen and Paper
- Axe
- Pocket Knife / Multi-Use Pocket tool
- Rope (for various applications)
- Duct Tape



Personal Supplies and Medication



- First Aid Kit and Supplies
- Toiletries (roll of toilet paper- remove the center tube to easily flatten into a zip-lock bag, feminine hygiene, folding brush, etc.)
- Cleaning Supplies (mini hand sanitizer, soap, shampoo, dish soap, etc. Warning: Scented soap might "flavor" food items.)
- Up-to Date Immunization Records
- Medication (Acetaminophen, Ibuprofen, children's medication etc.)
- Prescription Medication (for 3 days with copies of prescriptions)



Personal Documents and Money



- Government Issued Identification
- Legal Documents (Birth/Marriage Certificates, Wills, Passports, Contracts, etc)
- Vaccination Papers
- Insurance Policies
- Cash
- Credit Card
- Pre-Paid Phone Cards



Miscellaneous



- Bag(s) to put 72 Hour Kit items in (such as duffel bags or back packs, which work great) Make sure you can lift/carry it!
- Re-sealable plastic bags (various)
- Cell Phone Charger (Wall and Car)
- Infant Needs (if applicable)
- Pet Needs



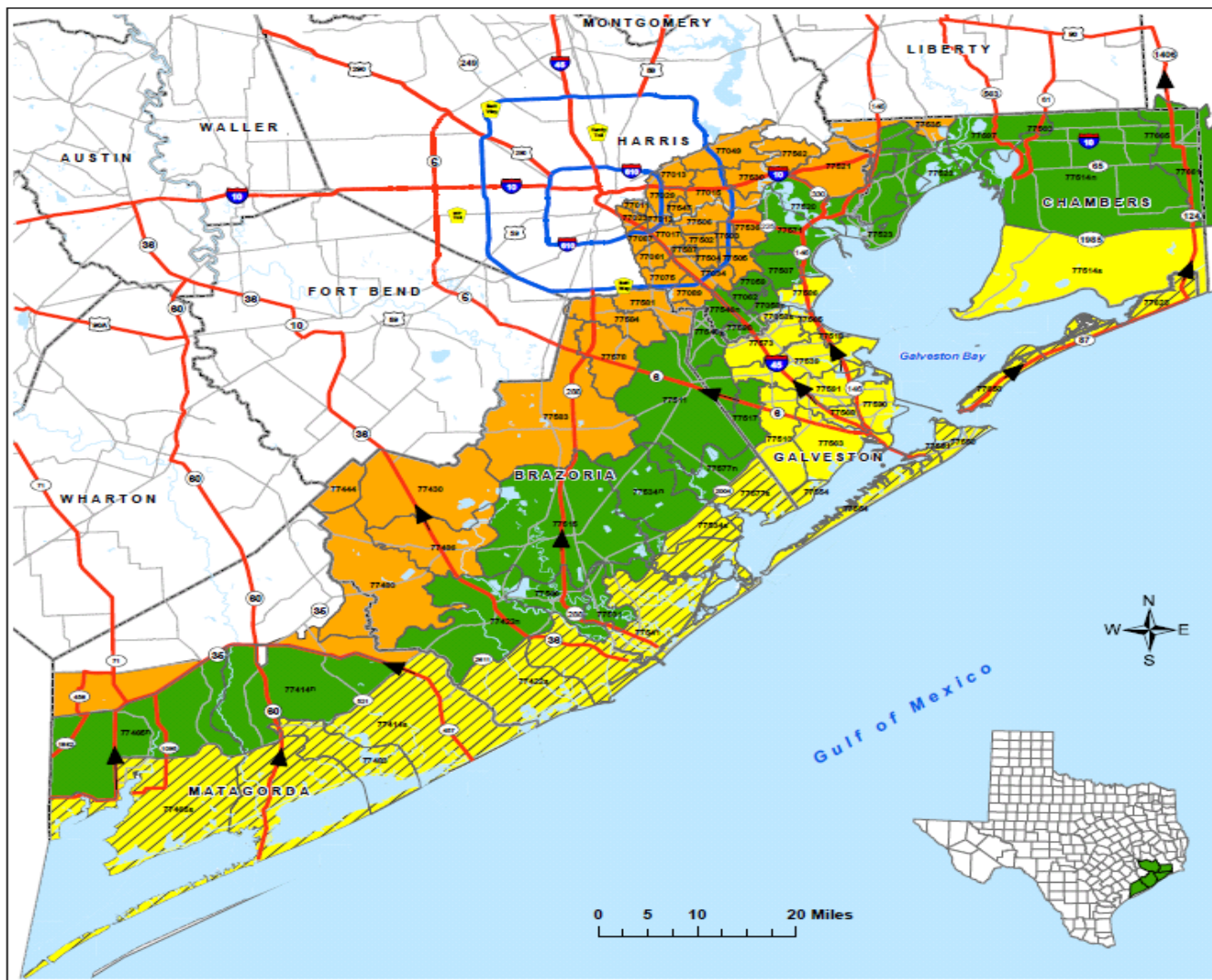
What is a Plan?



- What are you going to Do?
- Where are you going to Go?
- When am I going to leave?
- Do Family members know what I am doing?
- What do I do with my residence?



Evacuation



Brazoria, Chambers, Galveston, Harris and Matagorda Hurricane Evacuation Zip-Zones Coastal, A, B, C

Zip-Zone Coastal				
77414s	77453	77550	77577s	77650
77422s	77534s	77551	77587	
77455s	77541	77554	77523	
Zip-Zone A				
77058s	77518	77565	77586	
77510	77539	77568	77590	
77514s	77563	77573	77591	
Zip-Zone B				
77058n	77507	77522	77560	77661
77059	77511	77523	77566	77665
77062	77514n	77531	77571	
77414n	77515	77534n	77577n	
77422n	77517	77546n	77587	
77465n	77520	77546s	77598	
Zip-Zone C				
77011	77034	77444	77505	77562
77012	77049	77463	77506	77578
77013	77061	77480	77521	77581
77015	77075	77486	77530	77583
77017	77087	77502	77535	77584
77023	77089	77503	77536	77587
77028	77430	77504	77547	

Route Designation

- Evacuation Corridors
- Evacuation Connections
- Other Roads
- County Boundary



Expiration Date December 2010
 Map Created by:
 Houston-Galveston Area Council



Are you Informed?



- Texas 2-1-1 for Special Needs Assistance
- 740 AM
- NOAA Weather Radio



CLEMC Hurricane Plan



Clear Lake Emergency Medical Corps (CLEMC)
Hurricane Disaster Plan

Time Frame as referred to in the following:

Condition 4 – Beginning of hurricane vulnerability season

Condition 3 - 36 hrs, 300 miles offshore – Hurricane Watch

Condition 2 - 24 hrs, 100 miles offshore – Hurricane Warning

Condition 1 - 8 hrs, Until Landfall – Activate Hurricane
Disaster Plan